

 **Fms**

**PTR 17**

Perfect Appearance

精 于 静

Excellent Performance

精 于 动



[http://www.facebook.com/pages/  
FMSmodel/434689396557695](http://www.facebook.com/pages/FMSmodel/434689396557695)




[www.fmsmodel.com](http://www.fmsmodel.com)



Please visit both our Facebook fonpage and our homepage for updated product information



## WARNING

 **WARNING:** Read the ENTIRE instruction manual to become familiar with the features of the product before operating. Failure to operate the product correctly can result in damage to the product, personal property and cause serious injury.

This is a sophisticated hobby product and NOT a toy. It must be operated with caution and common sense and enquires some basic mechanical ability. Failure to operate this Product in a safe and responsible manner could result in injury or damage to the product or other property. This product is not intended for use by children without direct adult supervision.

This manual contains instructions for safety, operation and maintenance. It is essential to read and follow all the instructions and warnings in manual, prior to assembly, setup or use, in order to operate correctly and avoid damage or serious injury.

### Safety Precautions and Warnings

As the user of this product, you are solely responsible for operating in a manner that does not endanger yourself and others or result in damage to the product or the property of others. This model is controlled by a radio signal subject to interference from many sources outside your control. This interference can cause momentary loss of control so it is advisable to always keep a safe distance in all directions around your model, as this margin will help avoid collisions or injury.

Age Recommendation: Not for children under 14 years. This is not a toy.

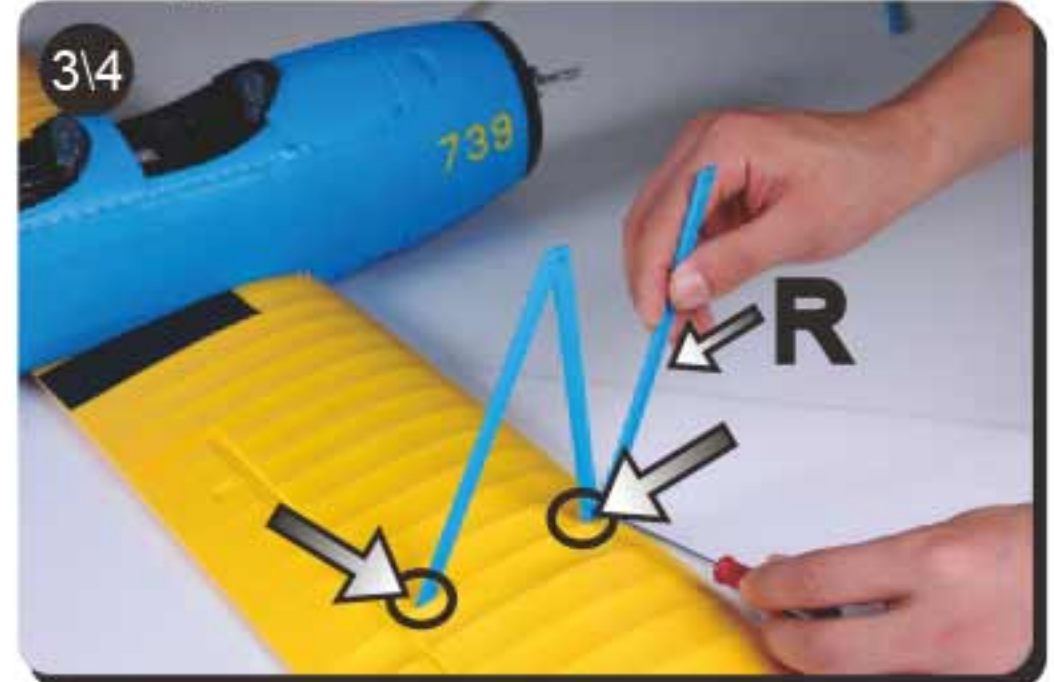
- Never operate your model with low transmitter batteries.
- Always operate your model in an open area away from cars, traffic or people.
- Avoid operating your model in the street where injury or damage can occur.
- Never operate the model in the street or in populated areas for any reason.
- Carefully follow the directions and warnings for this and any optional support equipment (chargers, rechargeable battery packs, etc.) you use.
- Keep all chemicals, small parts and anything electrical out of the reach of children.
- Moisture causes damage to electronics. Avoid water exposure to all equipment not specifically designed and protected for this purpose.
- Never lick or place any portion of your model in your mouth as it could cause serious injury or even death.



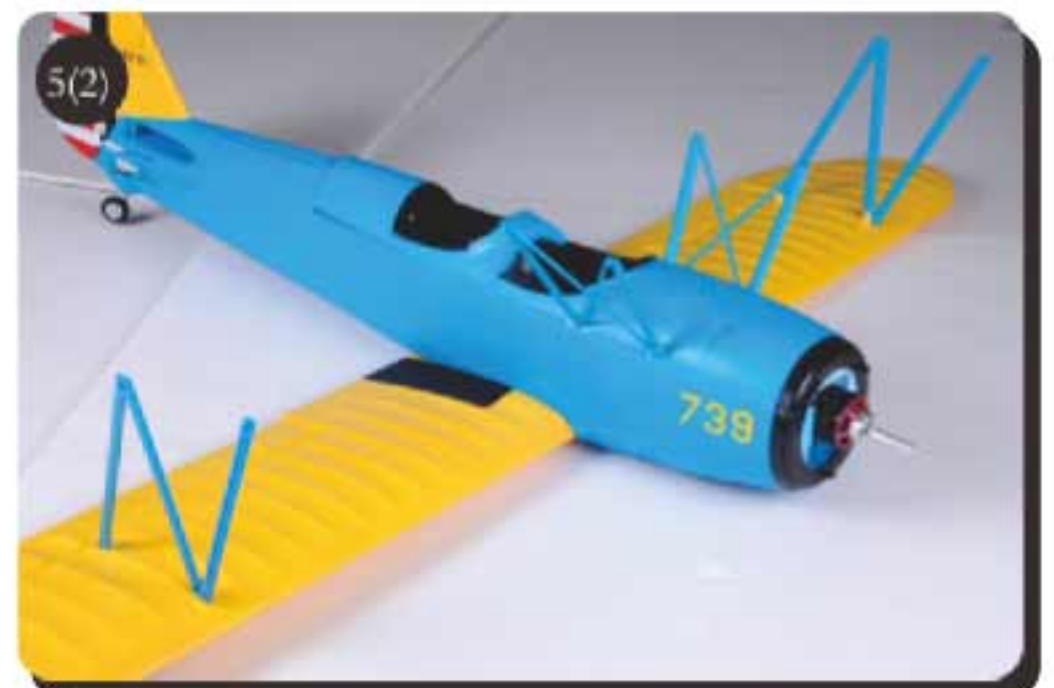


## Installing the Wing

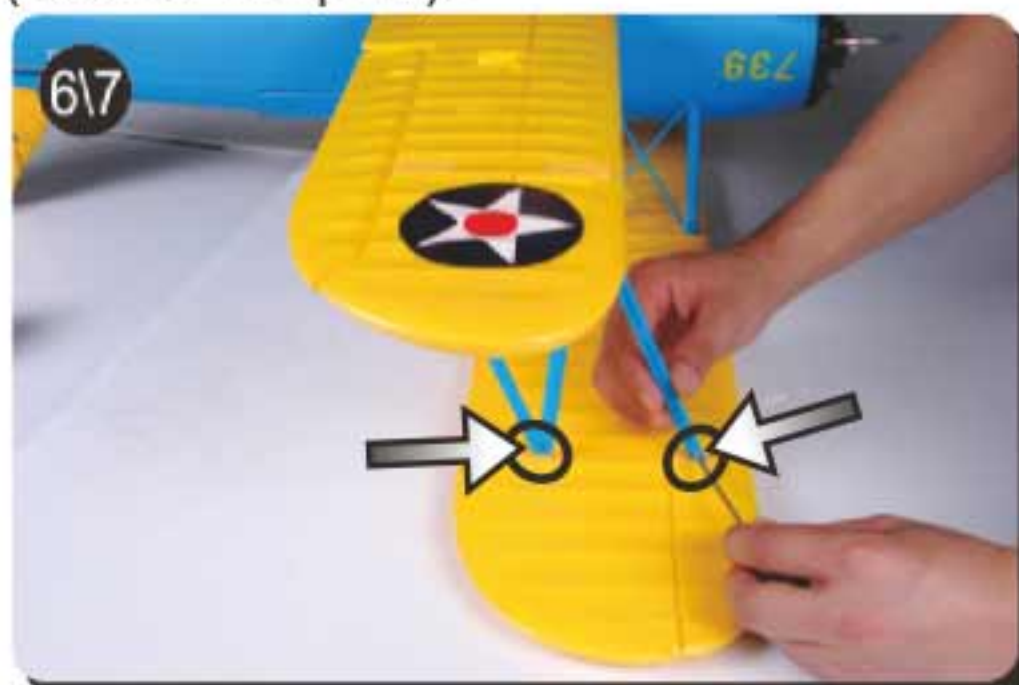
1. Turn aircraft over so the bottom of fuselage faces up.
2. Put the lower wing in fuselage and secure it to fuselage using screws.  
(A. PA2.6\*30 2pcs B. PA2.6\*23 2pcs)
3. Turn aircraft over so the bottom of fuselage faces low.
4. Attach left and right interplane struts to lower wing and secure using screws (PA 2.3\*6 4pcs).  
**Note:** There is a remark of "R" or "L" on the struts, please note.



5. Attach left and right cabanes to fuselage using screws (PA 2.3\*6 4pcs).  
**Note:** There is a remark of "R" or "L" on the cabanes, wrong assembly will cause flexural wing and can not fly well.



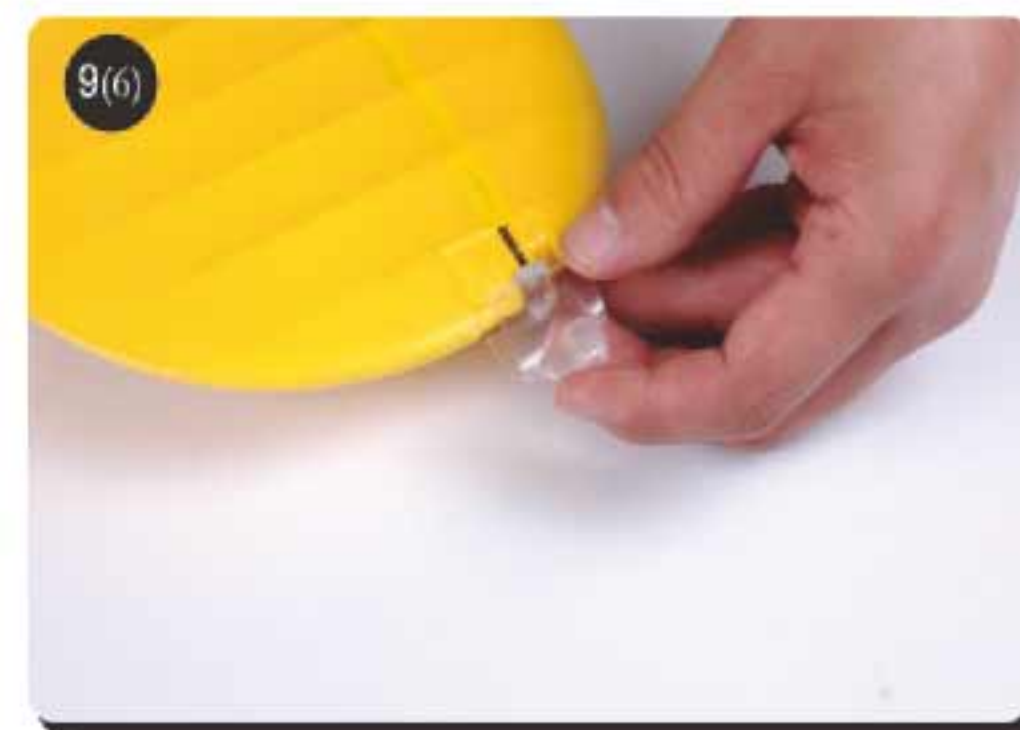
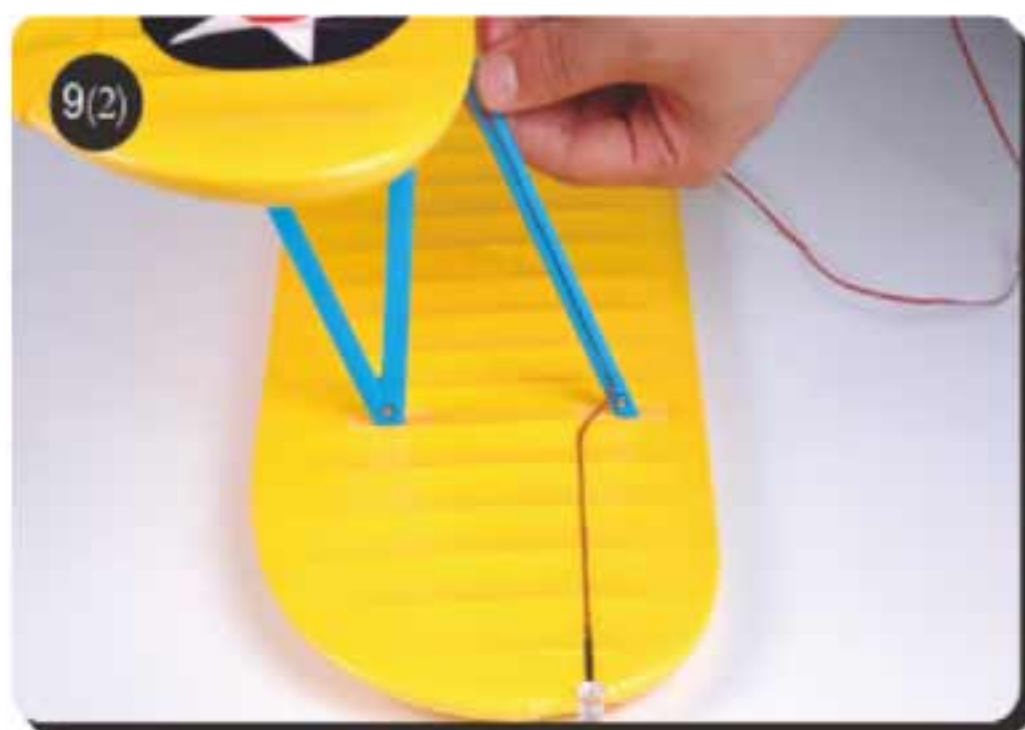
6. Turn aircraft over so the bottom of fuselage faces up.
7. Attach left and right interpalne struts to upper wing and secure using screws (PA 2.3\*6 4pcs ).
8. Attach left and right cabanes to upper wing using screws (PA 2.3\*6 4pcs).





## Installing the LED

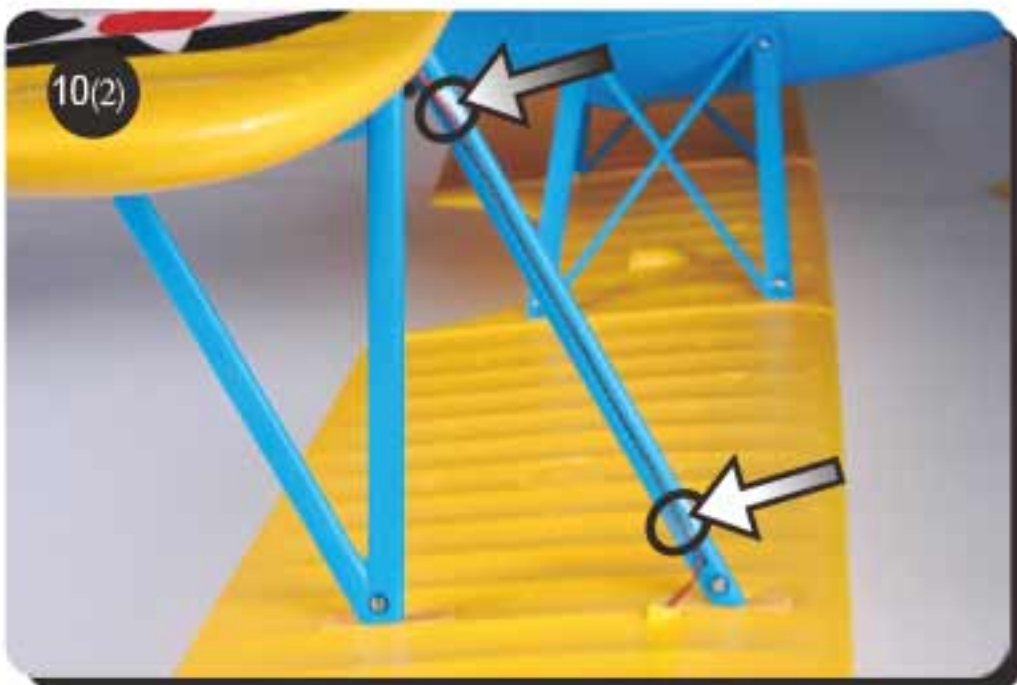
9. Install the LED wire on the upper wing as follow.





## Installing the LED

10. Fasten the wire on the struts using sticky tape.



11. Install the LED wire on the lower wing as follow.



12. Apply the sticker of "U.S. ARMY" on the lower wing as follow.





## Installing the Landing Gear

1. Open the battery cover.  
Pull the button as the arrow shows.



2. Apply glue on the combined side of the landing gear connection.



3. Install the landing gear as follow.



## Installing elevator

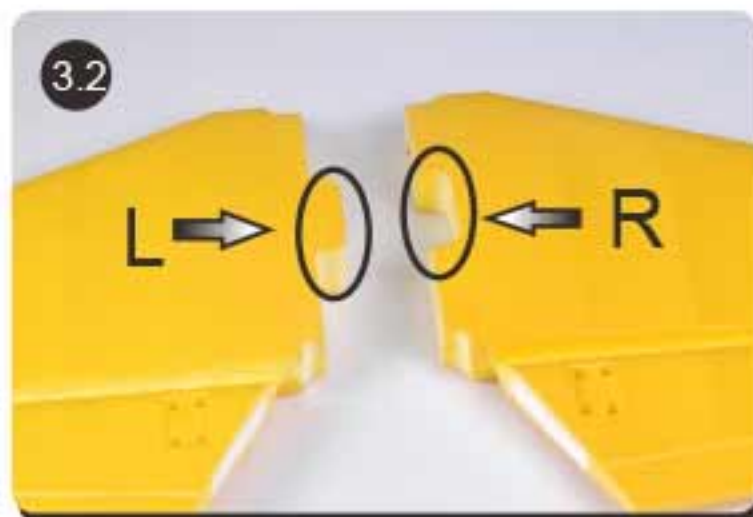
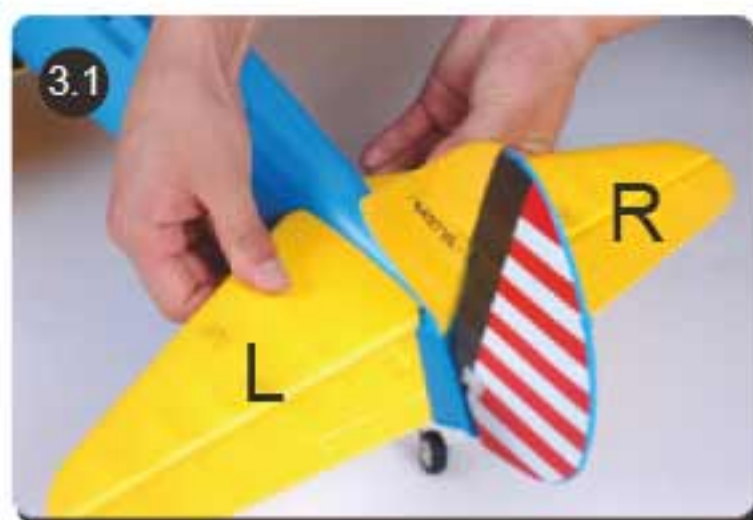
1. Apply glue on the combined side of the elevator connection on fuselage.



2. Apply glue on the combined side of the elevator.



3. Install the elevator.

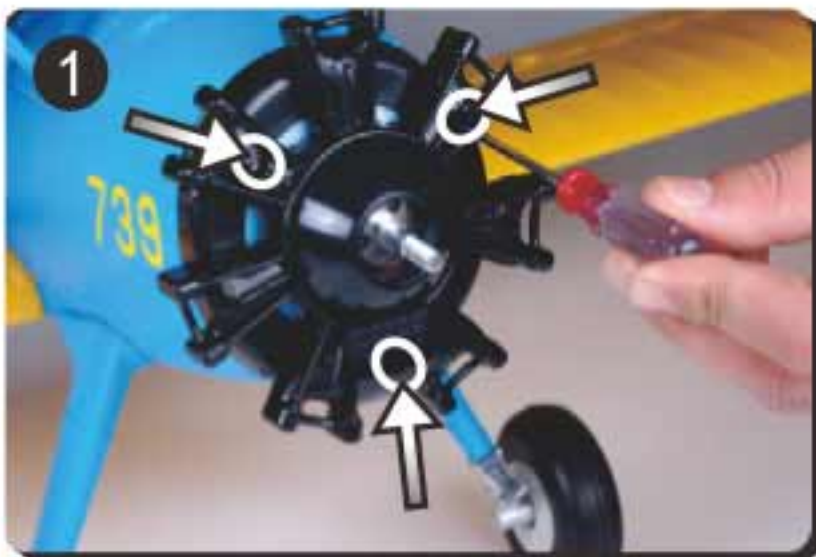




## step4-5

### Installing the Cowling, Propeller and spinner

1. Installing the dummy engine using screws.  
(PA 2.3\*6 3pcs)



2. Install the propeller making sure it is keyed into the motor shaft.



3. Install the spinner nut making sure it is tight enough.



### Installing the small parts of PT-17

1. Install the as follow



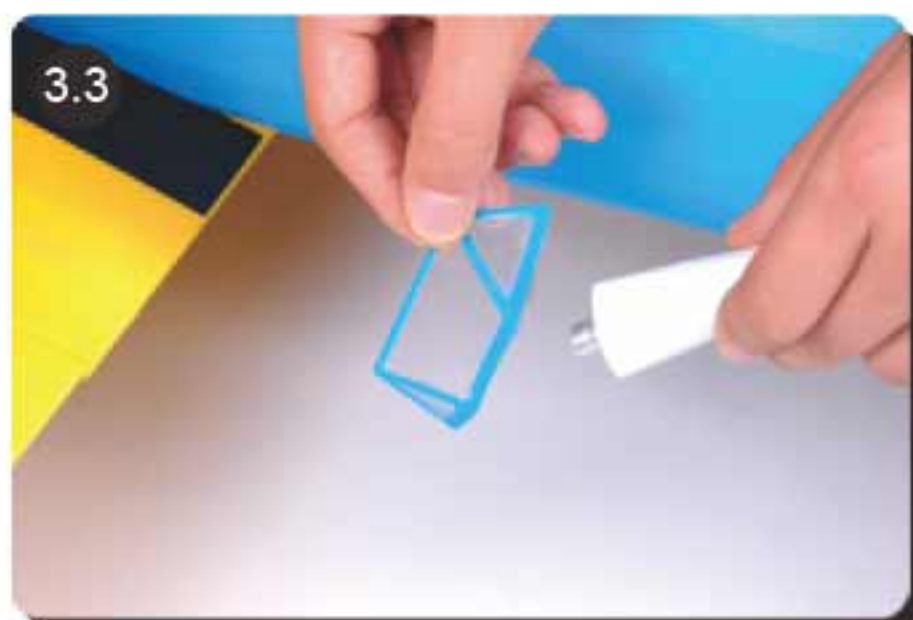
2. Install the antenna as follow.



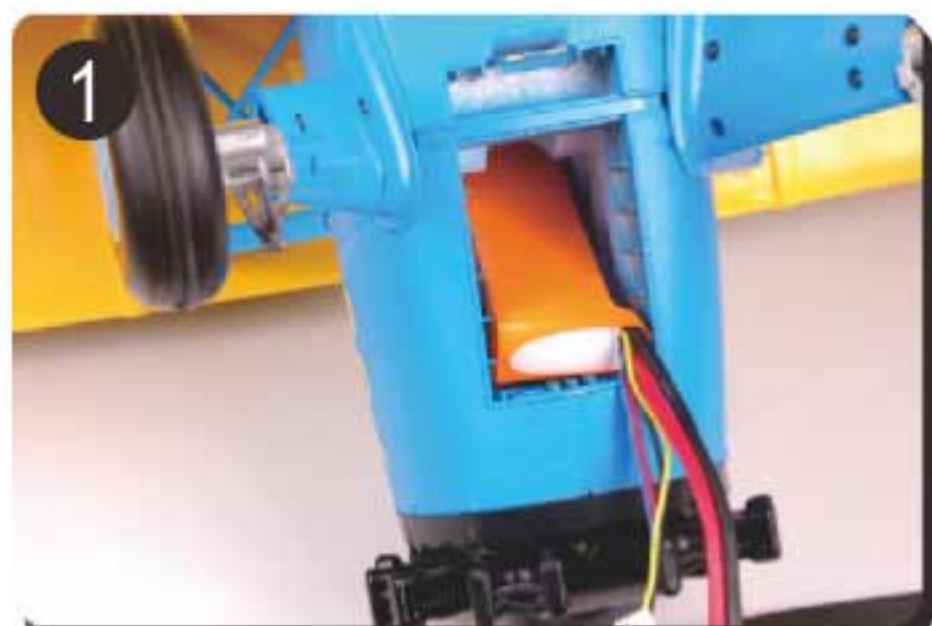


## Installing the small parts of PT-17

3. Install the Pilots and windshield as follow.



1. Battery position.



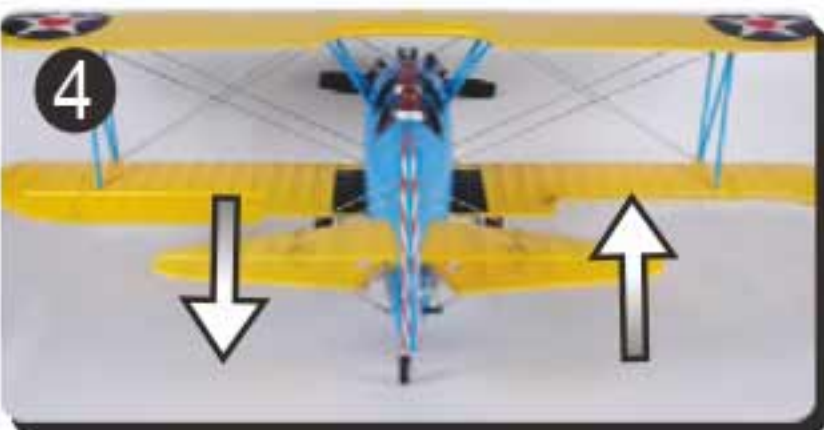
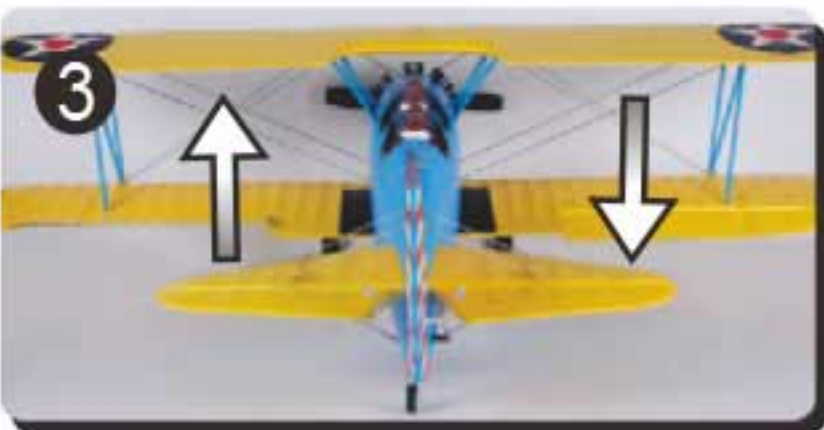
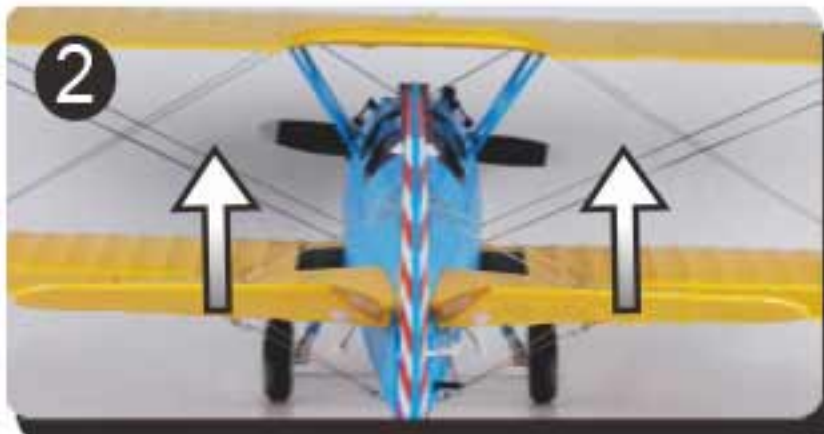
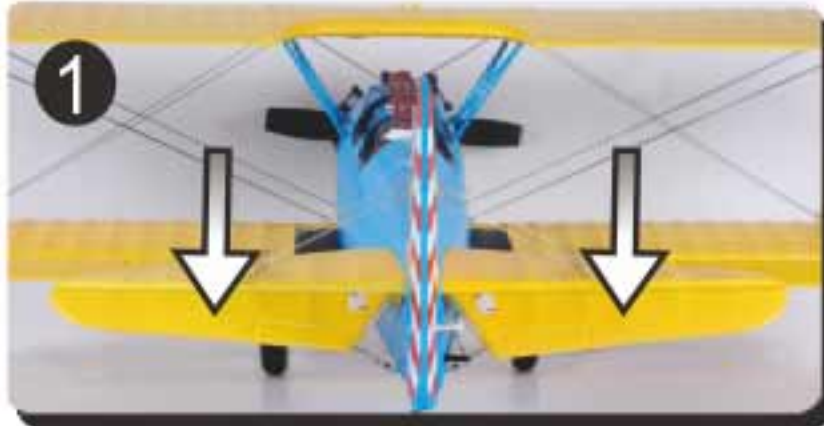
2. Battery cover

**Note:** Pull the button as arrow shows when installing the cover.





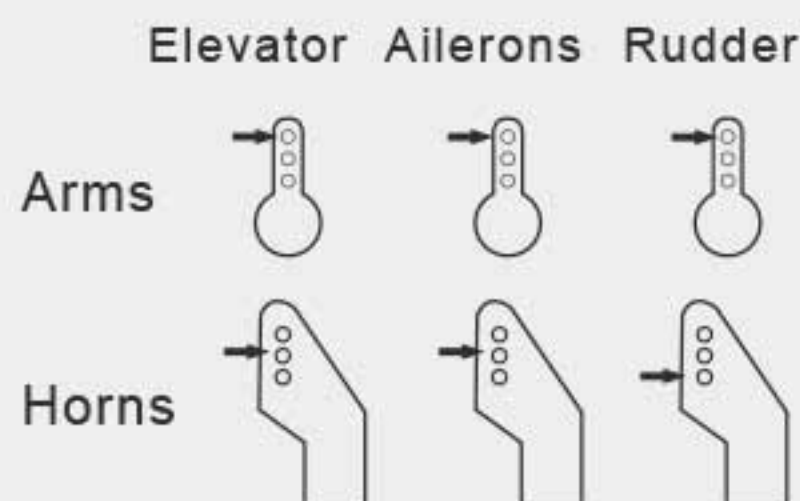
## Control Direction Test



1. Move the elevator stick on the transmitter forward and aft to check elevator pitch control. When the stick is pushed forward, the elevator should move down.
2. When the elevator stick is moved aft the elevator should move up.
3. Move the aileron stick left and right to check aileron roll control. When the stick is pushed to the left, the left aileron should move up and the right aileron should move down.
4. With the aileron stick pushed right, the right aileron should move up and the left aileron should move down.
5. Move the rudder stick left and right to check yaw control. When the stick is pushed to the right the rudder should also move to the right (if viewed from behind the airplane).
6. With the rudder stick pushed to the left, the rudder should move to the left (if viewed from behind the airplane).

If at any time during the test the controls respond in the opposite direction, it may be necessary to change the direction of operation of the flight controls. Follow your transmitter instructions to change the direction of the various flight controls.

## Factory setting



Fly the model at factory setting, For pilots who wish to fly the model with more control throw, adjust position of linkages on servo arms and control horns for increased travel.



## Main Specification

### Specification

Wingspan	: 1050mm /43.3 in
Length	: 850mm /34.6 in
Weight	: 1060g /37.4 oz
CG Position	: 80mm
Battery	: 11.1V Li-Po Battery
ESC	: 30A
Motor	: 3536-850kv
Wing Area	: 30.1dm <sup>2</sup>
Wing Load	: 35.2g/dm <sup>2</sup>
RC System	: 4 Channel, 4 Servos And 1 Brushless ESC

### Center of Gravity(C.G.)



## Spare Parts List

### Item# Description

- SJ-101. Fuselage(Bare with all the plastic parts installed)
- SJ-102. Main wing (Lower and top wing painted with all the plastic parts installed)
- SJ-103. Elevator
- SJ-104. Dummy engine.
- SJ-105. Spinner(prop holder and spinner)
- SJ-106. Cockpit
- SJ-107. Windshield
- SJ-108. Pilot (PI011)
- SJ-109. Decal sheet
- SJ-110. Screw set(Wing mounting, Interplane strut installing)
- SJ-111. Front landing gear set
- SJ-112. Motor board
- SJ-113. Propeller(11\*7)
- SJ-114. Linkage rods( With clevis)
- SJ-115. Motor shaft (With grub screw)
- SJ-116. Wing strut set
- SJ-117. Cowl
- SJ-201. Motor(D3536- KV 850)
- SJ-202. 9g servo (with arm)
- SJ-203. Esc(30A)
- SJ-204. Battery(11.1v,1800mAh,25C)



## Spare Part List



SJ-101



SJ-102



SJ-103



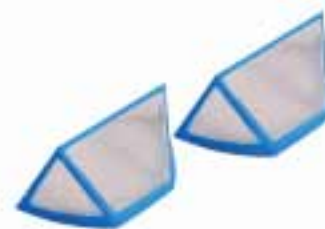
SJ-104



SJ-105



SJ-106



SJ-107



SJ-108



SJ-109



SJ-110



SJ-111



SJ-112



SJ-113



SJ-114



SJ-115



SJ-116



SJ-117



SJ-201



SJ-202



SJ-203



SJ-204



## Flying Tips

### Range Check Your Radio System

After final assembly, range check the radio system with the **FMS PT17**. Refer to your specific transmitter instruction manual for range test information.

### Flying

Always choose a wide-open space for flying your **FMS PT17**. It is ideal for you to fly at a sanctioned flying field. If you are not flying at an approved site, always avoid flying near houses, trees, wires and buildings. You should also be careful to avoid flying in areas where there are many people, such as busy parks, school yards, or soccer fields. Consult local laws and ordinances before choosing a location to fly your aircraft.

### Landing

Land the model when you notice a reduction in power. If using a transmitter with a timer, set the timer so you have enough time to make several landing approaches.

Due to the scale landing gear and characteristics of the **FMS PT17**, throughout flight and when landing keep the wings level, even when taxiing.

You should land the **FMS PT17** using a wheel landing (two point).

If the power is pulled all the way back when landing, the propeller acts like an air brake, which can lead to the elevator being less effective. Therefore, it is advisable to land with some amount of power on as it allows more time to flare the airplane for a smooth landing.

When setting up for landing, fly the airplane down to the ground using 1/4 – 1/3 throttle to allow for enough energy for a proper flare.

**NOTICE:** When finished flying, never keep the airplane in the sun. Do not store the aircraft in a hot, enclosed area such as a car. Doing so can damage the foam.

### First Flight Preparation

1. Remove and inspect contents.
2. Charge flight battery.
3. Read this instruction manual thoroughly.
4. Fully assemble model.
5. Install the flight battery in the aircraft (once it has been fully charged).
6. Bind aircraft to your transmitter.
7. Make sure linkages move freely.
8. Make sure the rubber ring has been properly slide on the clevis.
9. Perform the Control Direction Test with the transmitter.
10. Adjust light controls and transmitter.
11. Perform a radio system Range Check.
12. Find a safe and open area.



**Please read the following instructions and fully understand it.**

- (1) Do not fly in strong wind or bad weather.
- (2) Never fly the model in crowded areas, where there are lots of people, automobiles on the road or power lines overhead. Also do not fly around the airport. Please make yourself enough room for the flying and operating, as the plane can travel at high speed. Remember you are responsible for the safety of others.
- (3) Children under the age of 12 should have an adult guide. Never recommend for the children under the age of 14.
- (4) Never leave the charger in wet conditions.
- (5) The **PT17** is made from PA and polythene which are tinder. When it meets the heat, transfiguration can easily happen, so you must keep it away from heat.
- (6) Do not attempt to catch the **PT17** while flying, please do not touch the propeller.
- (7) Never leave this system unattended around children with battery in the unit, as injury may be caused due to children's turning on the transmitter or the plane.
- (8) During the preparation for the flight, please remember to turn on the transmitter before connecting the battery pack.
- (9) Close the throttle on the transmitter before connecting battery otherwise the motor may operate.





Email: [info@fmsmodel.com](mailto:info@fmsmodel.com)  
Http: // [www.fmsmodel.com](http://www.fmsmodel.com)